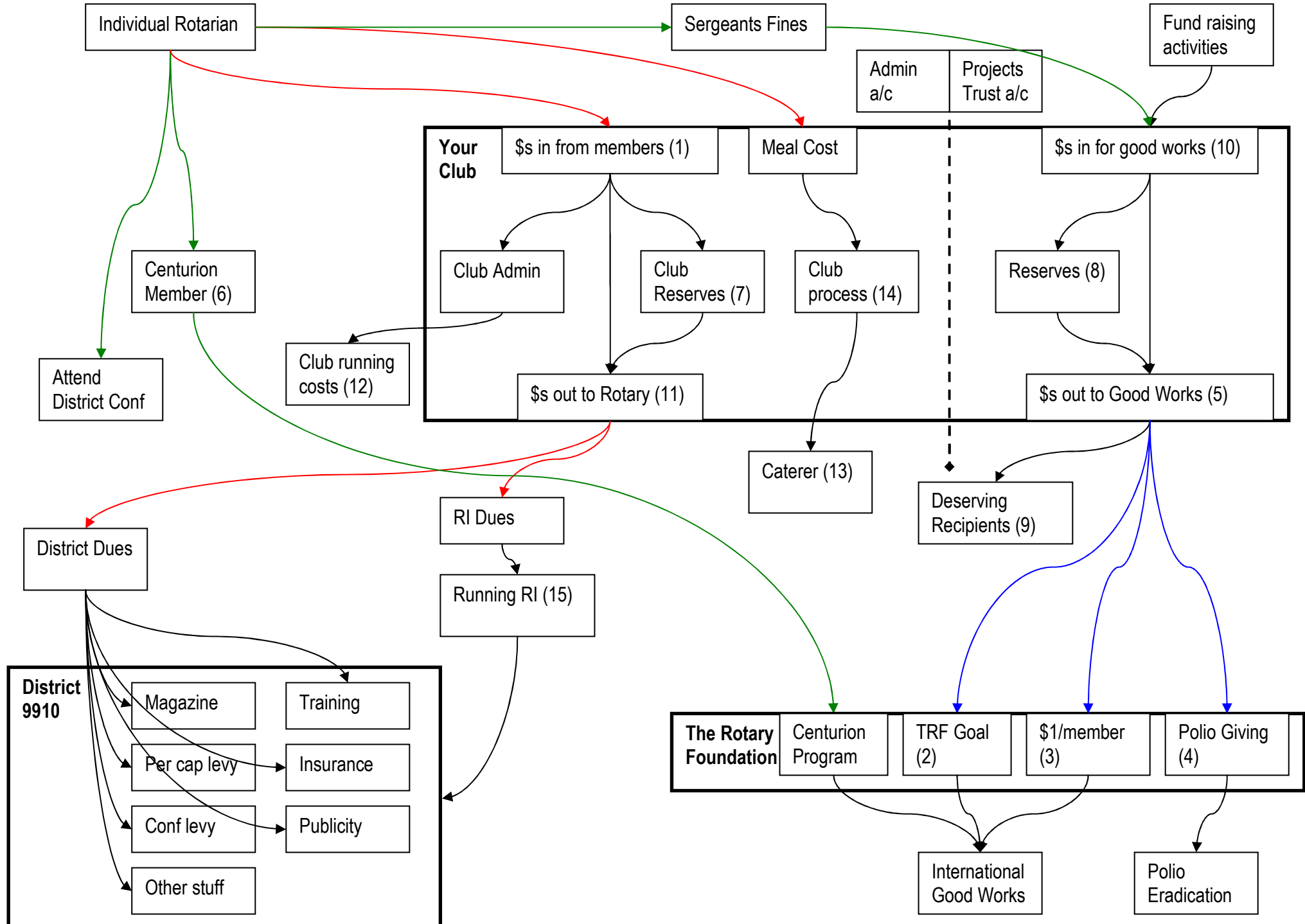


THE ROTARY CLUB OF NORTH HARBOUR: FLOW OF FUNDS



THE ROTARY CLUB OF NORTH HARBOUR: FLOW OF FUNDS

	Red – compulsory Blue – Goals set by the District in one way or another Green – Optional Black – where the money goes next
1	Basically club subscriptions. vary depending on what is included. Venue hire, food etc so very hard to compare.
2	The Rotary Foundation Goal. USD100 converted to NZD – about NZD125
3	100% Annual Programs Fund participation (every active member personally contributes some amount between 1 July 2011 and 31 March 2012); To get a Presidential Citation
4	4 year Polio giving target. The 4 years is nearly done and many clubs have completed their target
5	Good works – what you do in your community with the money you raise.
6	Centurion Member optional donation the TRF by individuals separate from club donations
7	What you have in your Club Admin account
8	Charitable money saved for an unforeseen event. Either a fundraiser fails and no money comes in or there is an earthquake and you need money now
9	The stuff you support in your community, MUNA, RYLA and all the optional rotary programs. Basically why you are there as a club
10	Money in – raised from the Public for all projects in your club
11	Supporting the District and Rotary International
12	Stationery, venue hire, everything you spend to keep the club administration (as opposed to good works) running
13	Meal cost and arrangement with the caterer varies wildly with different clubs
14	Some clubs process meal costs through the club, others basically pay the caterer directly. There is a money moving process somewhere in every club.
15	<p>A lot of RI Dues comes back to the District in one way or another. RI gives an allocation for supporting the District:</p> <ul style="list-style-type: none"> • To the DG for running the District: stationary, postage, internet, telephone, mileage/ travel for DG visits, accommodation for DG visits (circa NZ\$16K this year) etc. • Contribution for AG training (c. NZ\$ 3.2K) • Additional Training Subsidy for Pacific Islands (c. NZ\$ 16K) • Governor Elect Training Subsidy (accommodation) • Travel and accommodation for DGE at International Assembly in San Diego (main DG training)